

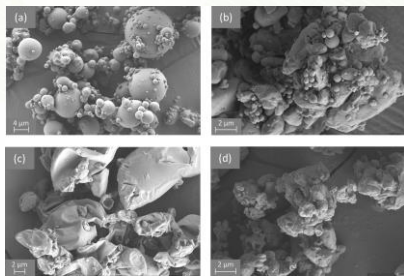
柯威任 助理教授

研究專長

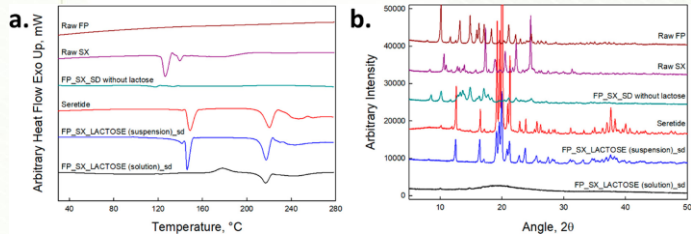
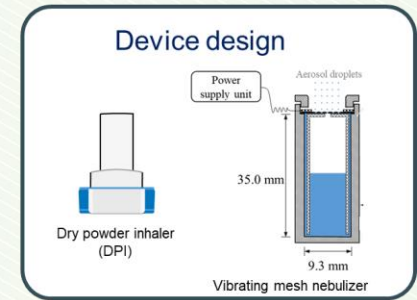
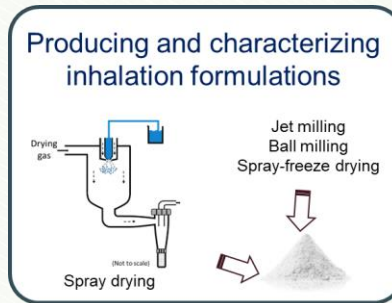
氣膠藥物與肺部藥物遞輸

Aerosol Medicine and Pulmonary Drug Delivery

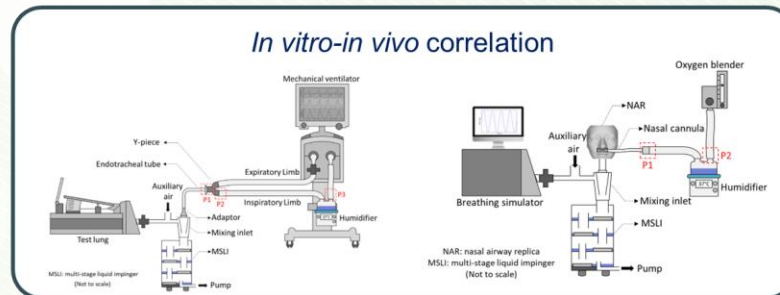
- 吸入型乾粉劑型製備與表徵檢測
- 改善吸入藥物體內體外測試關聯性
- 吸入器與相關輔助裝置設計
- 吸入氣膠藥物的遞輸效能評估



Spray-dried particles
Int. J. Pharm. 2021, 602, 120608



DSC thermograms (a) and XRD diffractograms (b) of spray-dried samples
Anal. Chem. 2020, 92, 8323–8332



國立臺灣大學藥學研究所

Published Papers: <https://scholars.lib.ntu.edu.tw/cris/rp/rp200341>

GRADUATE INSTITUTES OF PHARMACEUTICAL SCIENCES